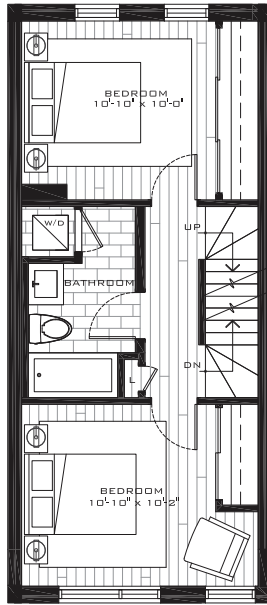
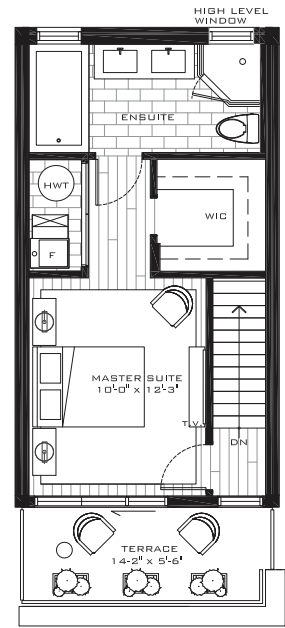




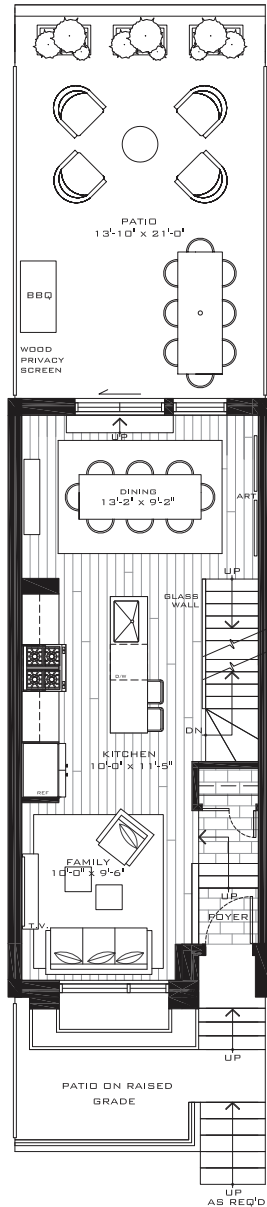
LOWER JCT.



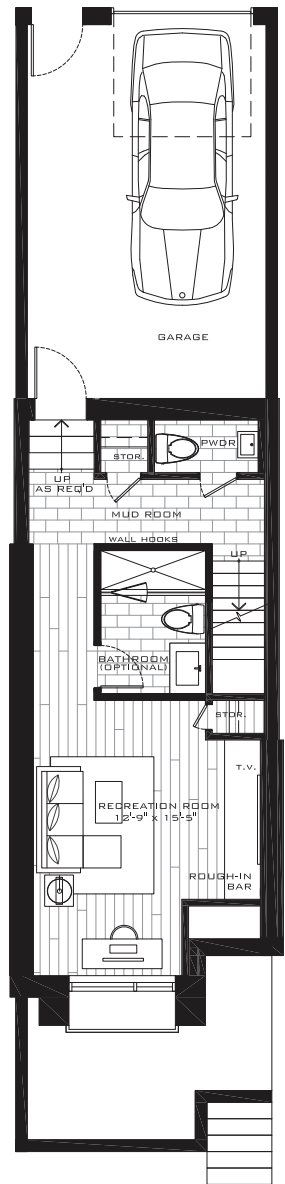
SECOND



THIRD



MAIN



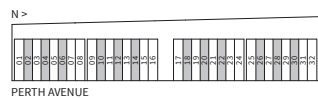
GROUND

# STERLING WEST TWNS.

STOREY //	AREA S.F. //
THIRD FLOOR	378
SECOND FLOOR	470
MAIN FLOOR	461
GROUND FLOOR	461

**TOTAL: 1770 S.F.**

PATIO	290
PATIO/RAISED GRADE	62
TERRACE	72



Sizes and specifications are subject to change without notice. E. • O.E.