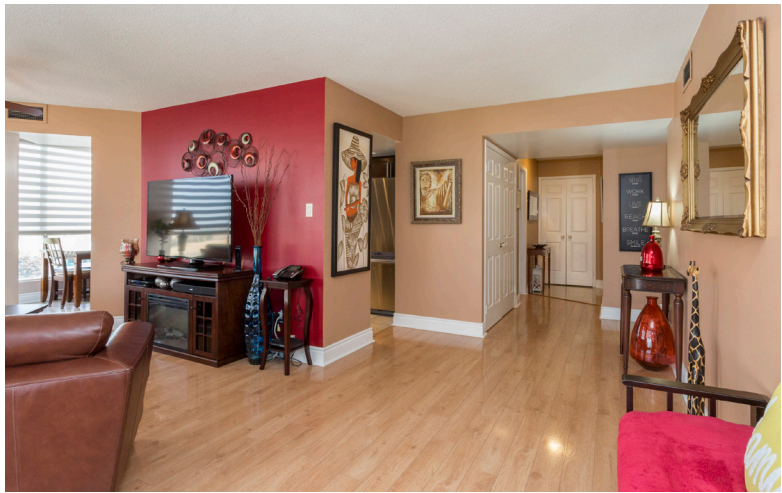


55 KINGSBRIDGE GARDEN CIRCLE SUITE 810 | MISSISSAUGA, ONTARIO





Elegance & luxury awaits at 'The Mansion' – one of Mississauga's most desirable condo buildings.

This gorgeous and bright 2 bedroom + solarium suite is completely renovated with beautiful finishes throughout and features approximately 1250 sq ft of interior space. Freshly painted in warm inviting tones, new light fixtures, new kitchen with solid wood cabinet doors, stainless steel appliances, stylish glass tile backsplash, decadent extra thick granite counters, double under-mount sinks. Two completely renovated new bathrooms in luxurious white spa-like style, laminate flooring throughout, new front foyer entry floor tiles, split bedroom floor plan for privacy, large master bedroom fits king sized furniture & has a fabulous 3pc en-suite bath with walk-in shower. Solarium off of the master bedroom makes a nice office, lounge or small child's nursery. High quality custom window coverings throughout highlight the amazing windows in this corner suite. En-suite laundry with full size front loading washer & dryer. Includes rare 2 owned side by side parking spots & storage locker.

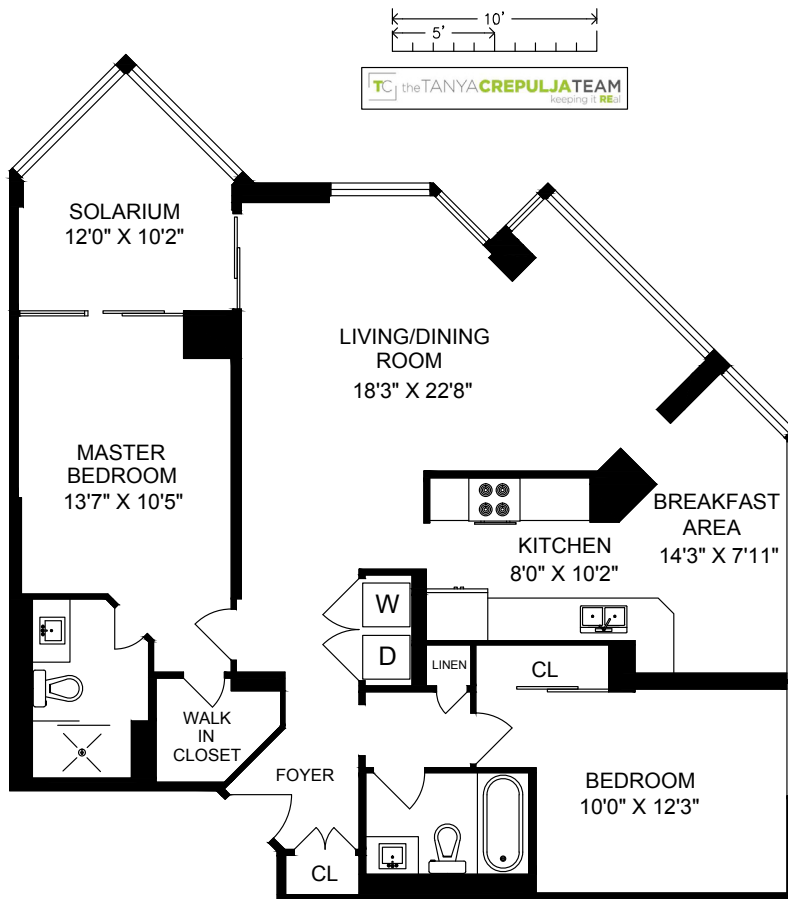
Luxurious and well-appointed amenities will make you feel like you're living in a full service hotel. Newly renovated lobby, common areas and hallways with quality finishes and thoughtful details. 24 hour concierge, indoor pool and spa, games room, lounge, gym, tennis courts, ample visitors parking are some of the fabulous features you'll find here.

Enjoy this stellar location near Square One Shopping Centre along with a world of shops, restaurants and services right outside your door. Excellent location for commuters with easy access to HWY 403, QEW and 401.

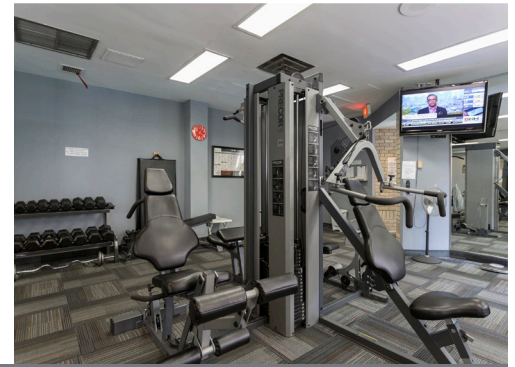
Low maintenance fee of \$924.78 includes cable and all utilities!
Property taxes \$2614.39/2016

Purchase includes: all stainless steel appliances: Samsung fridge, microwave, LG stove, Whirlpool dishwasher, LG washer & dryer, all electrical light fixtures, all custom window coverings, ceiling fan, 2 parking spots, 1 storage locker.

55 KINGBRIDGE GARDEN CIRCLE



SUITE 810 - 1246 SQUARE FEET
Measurements and Calculations are approximate
To be used as guidelines only



For additional pictures & property info please visit:
www.55KingsbridgeGardenCircle810.com

Tanya Crepulja
Sales Representative

Sutton Group Realty Systems Inc. Brokerage
1528 Dundas Street West, Mississauga, ON L5C 1E4

(647) 293-3785 - Direct
(905) 896-3333 - Office

TC the **TANYA CREPULJATEAM**
keeping it **REAL**

TCteam.ca



All information contained herein has been supplied by the Seller to the best of his knowledge. It is not warranted or guaranteed by Sutton Group Realty Systems, Inc. Brokerage. All measurements are approximate.