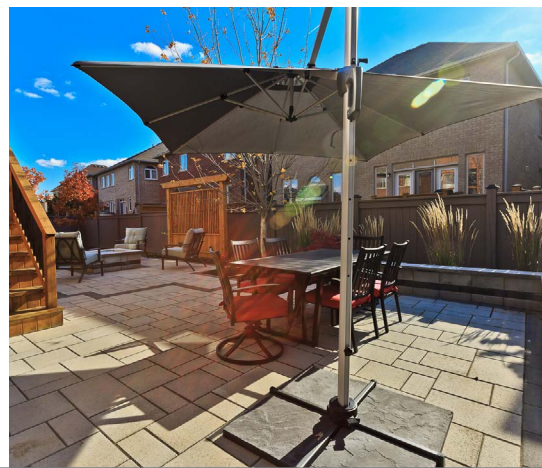
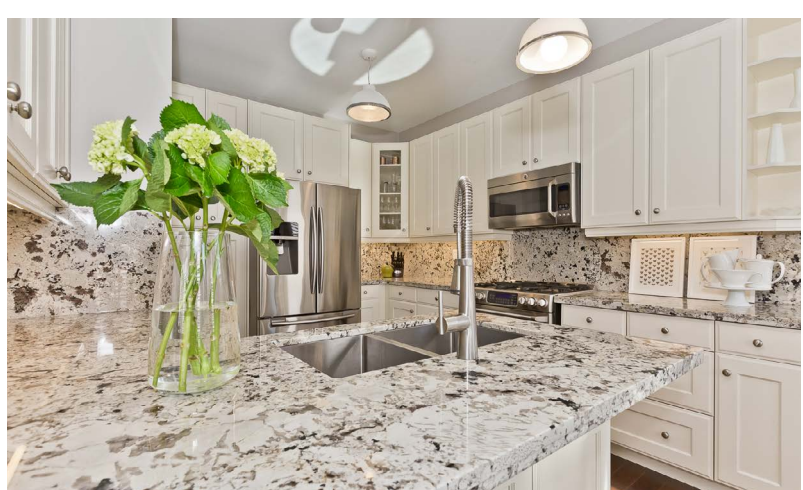
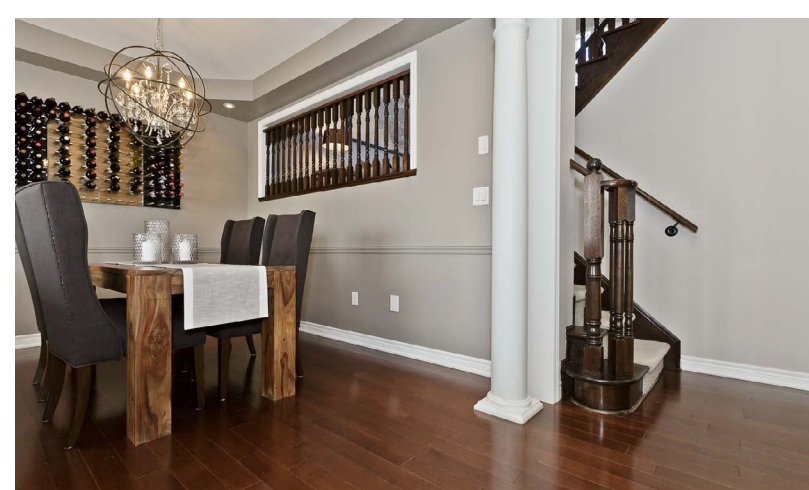


# 4614 ASHLAR CRESCENT

BURLINGTON, ONTARIO





# 4614 ASHLAR CRESCENT | BURLINGTON, ONTARIO

Welcome to 4614 Ashlar Cres. This Fernbrook built, upgraded executive home will not only wow you with its interior and high-end details, you'll love the premium pie shaped lot with absolutely stunning curb appeal and professionally landscaped details.

## FEATURES:

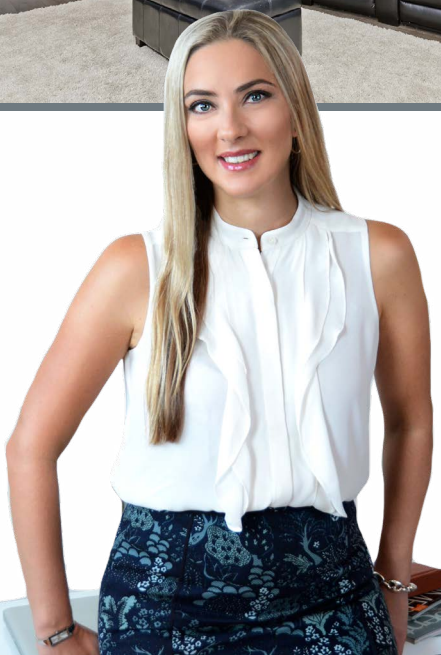
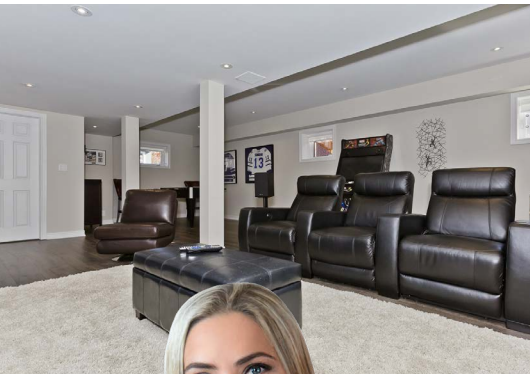
- 4 bedroom, 4 bath home at 2570 sq ft above grade (as per builder's plan) and 1002 sq ft in the lower level
- One of Alton's largest lots in this category. Premium pie shaped, fenced lot at 31.45 x 85.76 x 77.58 x 102.54 feet
- Rarely available and highly desirable Faimount Creek floor plan offering a fantastic layout and an abundance of natural light
- Stucco and stone elevation and professional land/hardscaping with custom stone stairs, patio, updated driveway with stone detail
- Gorgeous landscaping in the backyard with large custom stone patio, gas fire-pit, new deck, and ample lawn space to play
- Main floor with unique feature walls for art and décor along with built-in custom cabinetry in the living room, and 3 way open concept gas fireplace
- Open concept yet formal dining room with coffered ceiling and stunning chandelier
- Dream kitchen with white shaker cabinetry, Alaska White granite counters and backsplash, breakfast bar, impressive stainless steel appliances including gas stove, large eat-in breakfast area with walk out to deck
- Elevated family room with beautiful architectural features, vaulted ceiling and large picture windows
- All bathrooms with premium granite counter tops, modern sinks and fixtures, pot lights and new mirrors
- Bright and spacious Master bedroom with modern ceiling fan, walk-in closet and luxuriously appointed en-suite bathroom with dual sink vanity, soaker tub and large walk-in shower
- Main floor laundry room with ample storage, granite counters and upscale front loading washer/dryer
- Finished lower level recreation and entertaining space that's soundproofed and features a large rec-room, laminate flooring, pot lights and a full bathroom with walk-in shower
- Other features include hardwood flooring, pot lights throughout, smooth ceilings on main, gas line BBQ hook up, California shutters throughout main and 2nd floor, roller shades in lower level, sprinkler system, Nest cameras at front, Nest thermostat, Smart garage door opener, high-end Pella brand front door and rear patio door, tasteful décor in neutral tones throughout

Alton Village is Burlington's newest and hottest community to live. It's situated in a prime location near major highways, all types of shopping and amenities you could think of. Alton is home to highly rated schools and recreation including Norton Community Park - an amazing play space for the entire family which includes two artificial turf fields, a skate park, splash pad, playground and lease free dog park area.

Purchase includes: stainless steel fridge, gas range, microwave/range hood, dishwasher, front loading washer & dryer, all electrical light fixtures, all window coverings, Nest cameras, garage door opener & remote, central vacuum & attachments, shed in backyard, epoxy flooring in garage, owned Hot Water Tank.

Property taxes: \$5242.45/2017





For additional pictures & property info please visit:  
[www.4614AshlarCres.com](http://www.4614AshlarCres.com)

**Tanya Crepulja**

Broker

**Keller Williams Realty Solutions, Brokerage**

101-1270 Central Pkwy West, Mississauga, ON L5C 4P4

(647) 293-3785 - Direct

(905) 949-8866 - Office

**TC** the **TANYA CREPULJA TEAM**  
keeping it **REal**

[TCteam.ca](http://TCteam.ca)

**kw**  
KELLERWILLIAMS.  
Independently owned and operated.

**MCNE**  
MASTER CERTIFIED NEGOTIATION EXPERT

All information contained herein has been supplied by the Seller to the best of his knowledge. It is not warranted or guaranteed by Keller Williams Realty Solutions, Brokerage. All measurements are approximate.