

2365 CENTRAL PARK DRIVE, SUITE 309 OAKVILLE, ONTARIO



2365 CENTRAL PARK DR, SUITE 309 | OAKVILLE, ONTARIO

Live in Oakville's vibrant Oak Park/Uptown Core! Presenting 2365 Central Park Dr, Suite 309 at One Oak Park built by reputable builder, Tribute Communities. This immaculately maintained condo features tasteful finishes and details with everything you're looking for in a stylish and upscale suite.

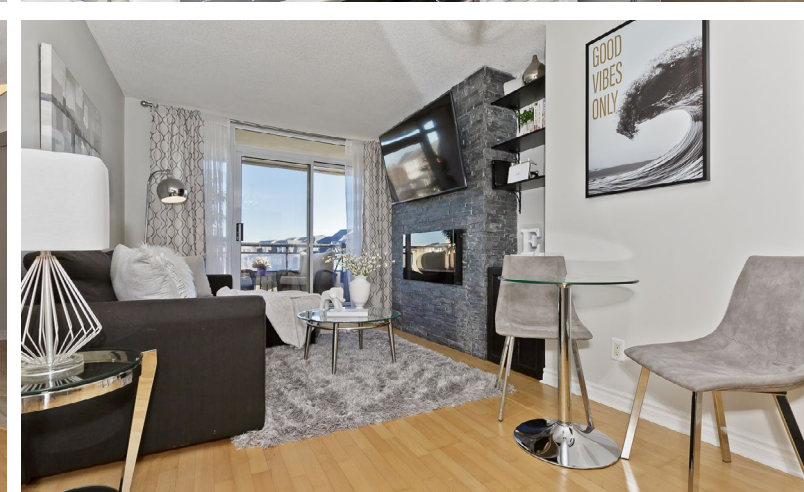
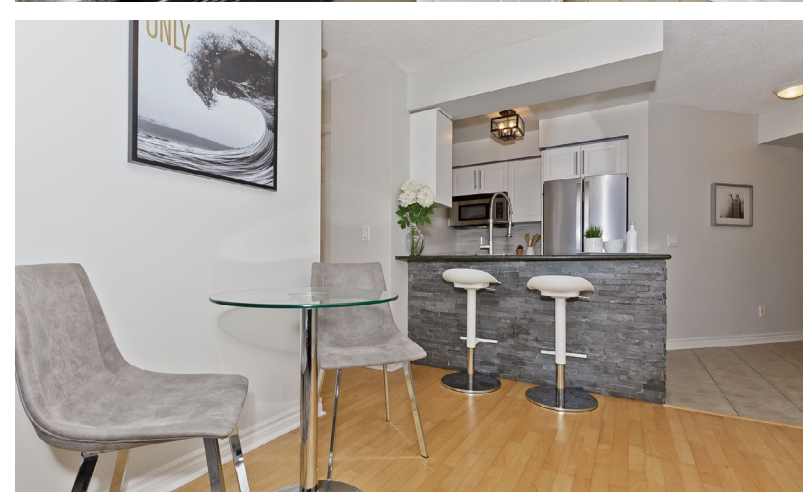
FEATURES:

- 2 bedroom, 2 bath preferred corner suite with 850 sq ft interior
- Practical layout with beautiful décor
- Spacious entry foyer with large closet
- Open concept living and dining room combination offers a stone feature wall, modern electric fireplace, built-in bookshelves, laminate flooring and updated light fixtures
- Refreshed kitchen with white cabinets, modern hardware, granite counters, tile backsplash, newer stainless steel appliances including a full size French door fridge, and unique stone detail at the breakfast bar peninsula
- Freshly painted neutral wall colour in main rooms
- Master bedroom with plush broadloom, large windows and 3 piece en-suite bath with built in shelving
- Bright 2nd bedroom with large windows and large closet
- Spa inspired 2nd bathroom with soaker tub and refreshed vanity
- Covered balcony with peaceful views overlooking the outdoor pool
- Lower floor level feels like living in a townhouse suite
- Beautiful views of the exterior architectural landscape and park/pond area
- En-suite stacked washer/dryer
- Storage locker included
- Ample free visitors parking at the building

- Building amenities include: gym, outdoor pool & sun deck, courtyard BBQ area, party room/lounge
- All appliances, window covering hardware and light fixtures included in purchase
- Window drapery excluded

Maintenance fee \$730.03/month excludes hydro.

The Uptown Core/Oak Park area is one of the most in-demand neighbourhoods in Oakville. It's a well planned mix of residential freehold homes, ample retail/shopping all within walking distance, modern condos and a 27 acre Memorial Park with walking paths, park, playground and more making this a super desirable location. The area is continuing to grow with future development which may prove to further increase the market values, and commuting is a breeze as it's conveniently located near all major highways and transit.





For additional pictures & property info please visit:
www.2365CentralParkDr309.com

Tanya Crepulja

Broker

Keller Williams Real Estate Associates

101-1270 Central Pkwy West, Mississauga, ON L5C 4P4

(647) 293-3785 - Direct

(905) 949-8866 - Office

TC the **TANYA CREPULJA TEAM**
keeping it **REal**

TCteam.ca

kw
KELLERWILLIAMS.
Independently owned and operated.

MCNE
MASTER CERTIFIED NEGOTIATION EXPERT

All information contained herein has been supplied by the Seller to the best of his knowledge. It is not warranted or guaranteed by Keller Williams Realty Solutions, Brokerage. All measurements are approximate.