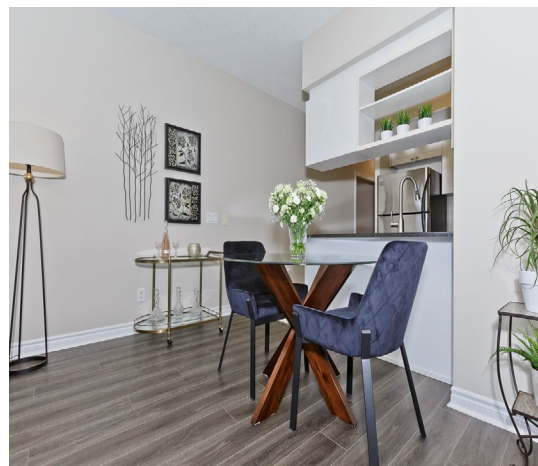


2365 CENTRAL PARK DR., SUITE 1112

OAKVILLE, ONTARIO



TANYA **CREPULJA** TEAM

TCTEAM.CA

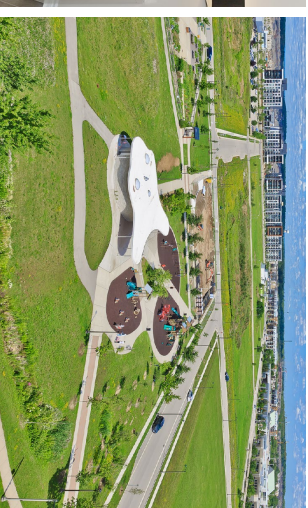


2365 CENTRAL PARK DR., SUITE 1112 | OAKVILLE, ONTARIO

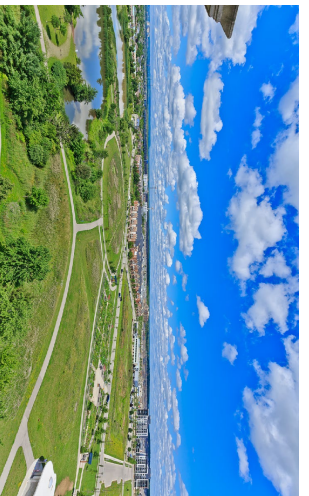
Live in Oakville's vibrant Oak Park/Uptown Core! Presenting 2365 Central Park Dr, Suite 1112 at One Oak Park built by reputable builder, Tribute Communities. This immaculately maintained condo features tasteful finishes and details with everything you're looking for in a stylish and upscale suite.

FEATURES:

- 1 bedroom + den, immaculately maintained sub-penthouse suite with 660 sq ft interior and unobstructed north-west view
 - Practical layout with updated and beautiful decor
 - Spacious entry/foyer with large closet
 - Separate den makes a terrific work from home space or a cozy nursery/bedroom
 - New luxury wide plank vinyl flooring throughout (Dec 2020)
 - Freshly painted throughout with designer selected Benjamin Moore tones
 - Open concept living and dining room with ample space for comfortably sized furniture
 - Contemporary white kitchen with tile backsplash, granite counters, stainless steel appliances and breakfast bar
 - Bedroom with mirrored double closet and large windows
 - Spa inspired bathroom complimented with crisp white vanity and tile
 - Covered balcony with peaceful views overlooking Memorial Park
 - New (2021) En-suite stacked washer/dryer
 - New light fixtures and custom window coverings throughout (2021)
 - Storage locker included
 - Ample free visitors parking at the building
 - Building amenities include: gym, outdoor pool & sun deck, courtyard BBQ area, party room/lounge
- Maintenance fee: \$582.65/month excludes hydro.
 Property taxes: \$2,108.52/2021



The Uptown Core/Oak Park area is one of the most in-demand neighbourhoods in Oakville. It's a well planned mix of residential freshhold homes, ample retail/shopping all within walking distance, modern condos and a 27 acre Memorial Park with walking paths, park, playground and more making this a super desirable location. The area is continuing to grow with future development which may prove to further increase the market values, and commuting is a breeze as it's conveniently located near all major highways and transit.





TANYA CREPULJA
BROKER

Keller Williams Real Estate Associates, Brokergae
101-1270 Central Pkwy West, Mississauga, ON L5C 4P4

647.293.3785 - Direct
905.949.8866 - Office

TANYA **CREPULJA** TEAM

TCTEAM.CA

For additional pictures & property info please visit:
www.2365CentralParkDr1112.com



All information contained herein has been supplied by the Seller to the best of his knowledge. It is not warranted or guaranteed by Keller Williams Real Estate Associates, Brokerage. All measurements are approximate.