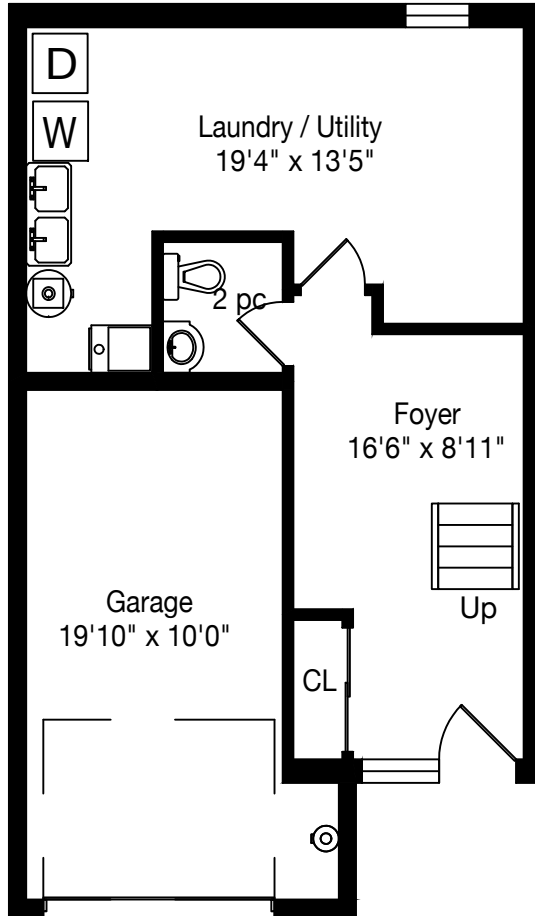
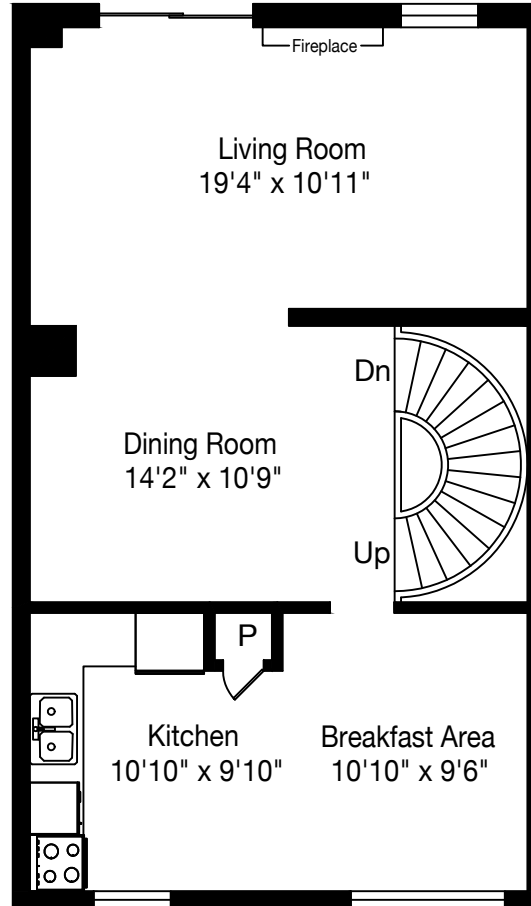


20-7077 Estoril Road

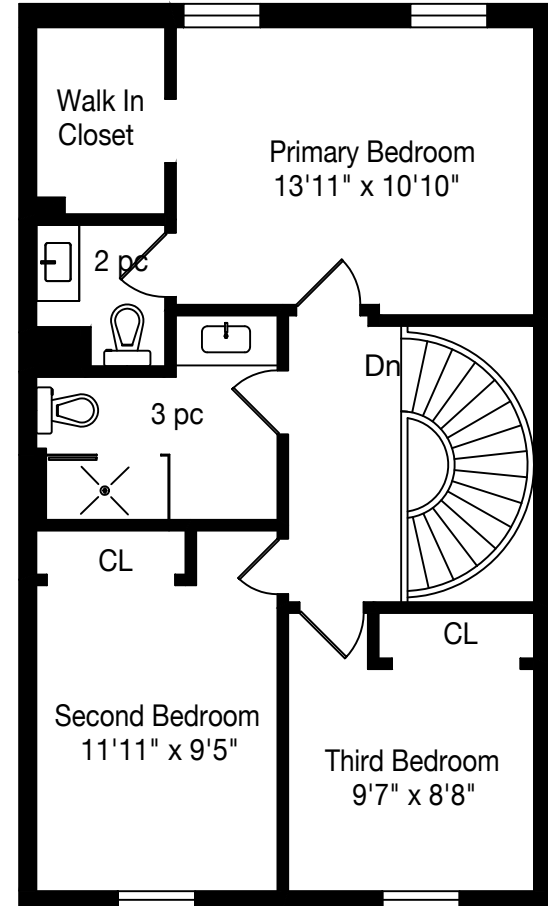
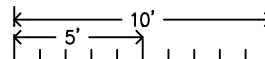
TANYA
CREPULJA
TEAM



Entry Level
449 Square Feet
+ 228 Garage



Main Floor
705 Square Feet



Second Floor
705 Square Feet

Total Square Footage - 1859 Square Feet

Measurements and Calculations are approximate
To be used as guidelines only
www.measuredup.ca