

2315 NATASHA CIRCLE

OAKVILLE, ONTARIO



TANYA CREPULJA TEAM

TCTEAM.CA

2315 NATASHA CIRCLE | OAKVILLE, ONTARIO

Absolutely stunning freehold end-unit townhouse in Bronte Creek's 'Harvest' community – built by New Horizon. You will love the sophisticated French-Country inspired design and impeccable model home worthy interior finishes. Welcome to 2315 Natasha Circle, Oakville.

FEATURES:

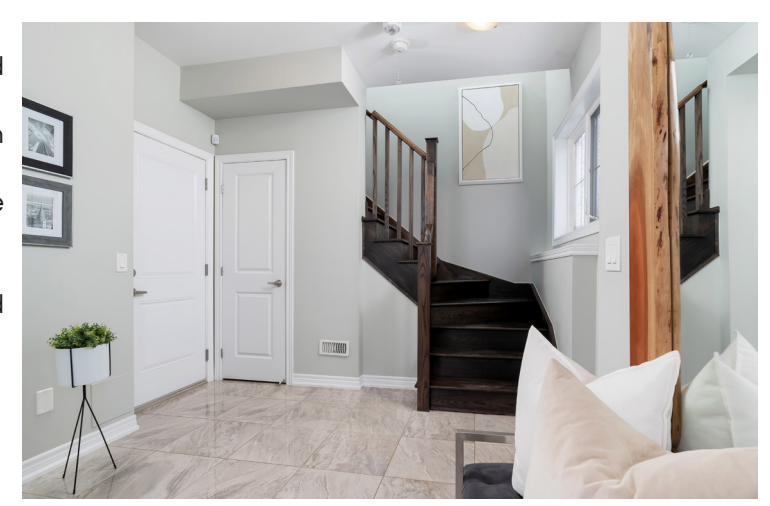
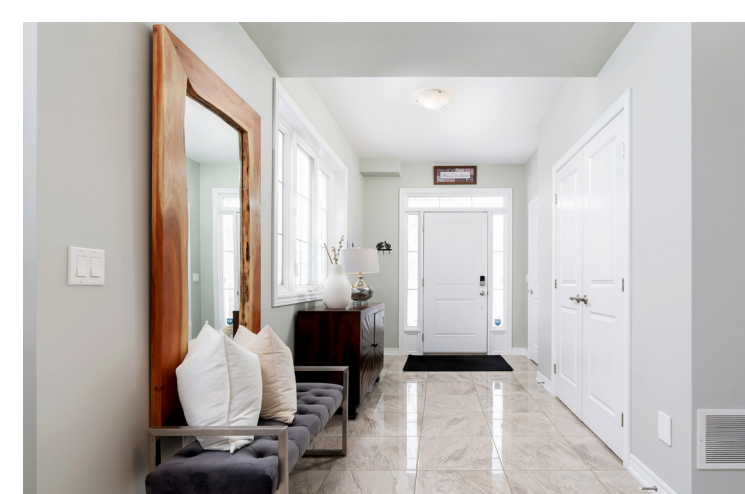
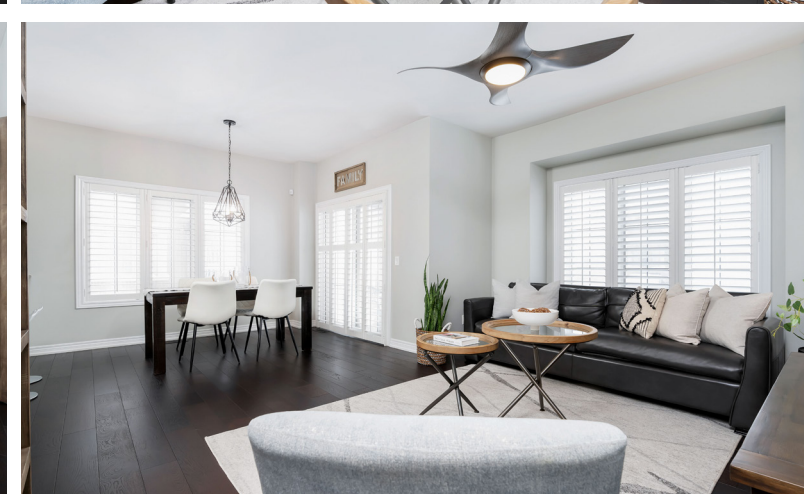
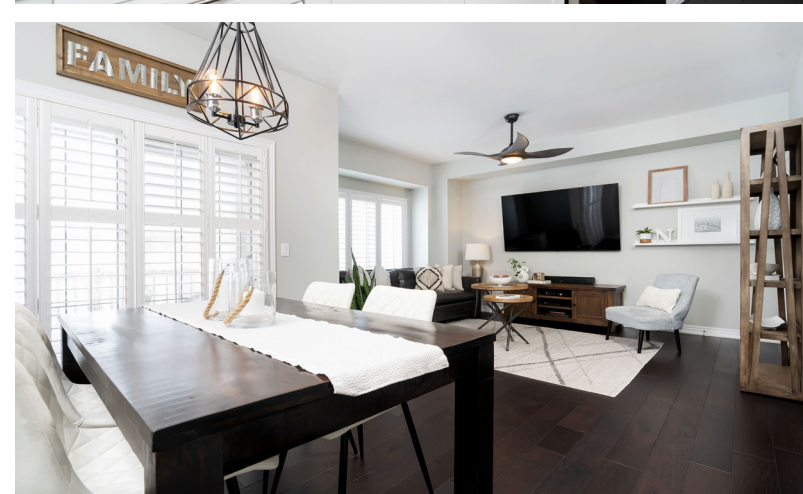
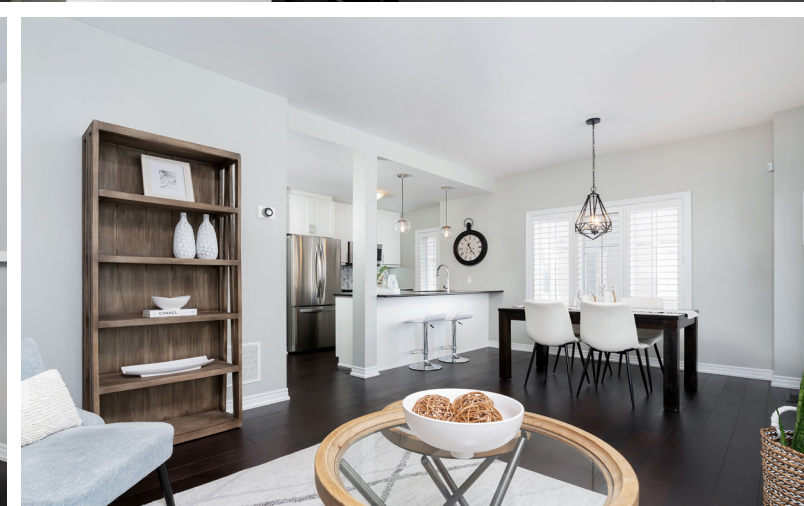
- 1438 sq ft 'Autumn Breeze' option 2 model as per builder's floor plan
- 2 bedroom, 2.5 bath, 6 year new end unit freehold townhouse
- Beautiful curb appeal with stucco and stone elevation and covered front porch
- Widened front drive/walk-way with interlock stone & rare parking for 3 vehicles + single car garage
- Numerous upgrades with tasteful colour palette and stylish finishes throughout
- Welcoming foyer/den with polished porcelain tile floors
- Gorgeous 6" wide plank espresso toned hardwood floors throughout main level
- Smooth ceilings on two levels
- Spacious, open concept living and dining rooms accented with stylish light fixtures
- Contemporary white kitchen with shaker cabinetry, modern hardware, marble backsplash, black pearl granite counters, upgraded stainless steel appliances, breakfast bar and window
- Main level walk-out to a covered balcony
- Main floor powder room with pedestal sink and stylish details
- Hardwood staircase with square finished banisters
- 2nd level features 2 bedrooms and 2 full baths
- Bedrooms feature panelled feature wall accents, upgraded berber broadloom and ample closet space
- Primary bedroom with 4 piece spa inspired ensuite bath including a soaker tub and freestanding shower
- Rare fully fenced in side yard with 18 x 18 ft aggregate stone patio and 6 x 6 ft storage shed
- Front loading washer and dryer
- Single car built in garage parking with entry into the home and driveway parking for two vehicles
- Driveway camera, video door bell & touchpad keyless entry

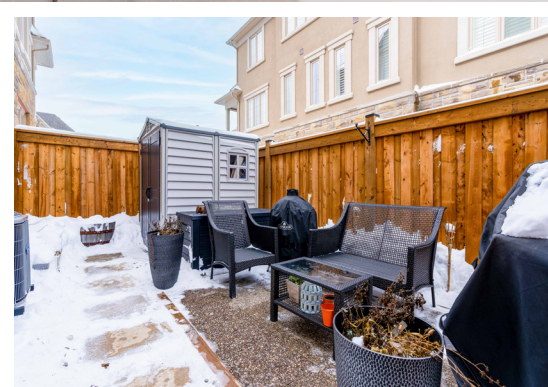
- Purchase includes all existing appliances: LG stainless steel fridge, Samsung stove, Samsung dishwasher, Samsung microwave/range-hood, white LG front loading washer & dryer, garage door opener & remote, all light fixtures, ceiling fans, California window shutters/window coverings where laid

Hot water tank and alarm system are on a monthly rental contract.

Property taxes: \$3440/2023

2315 Natasha Circle is situated on a quiet street in a beautiful residential neighbourhood with a true sense of community spirit and pride. You will love the convenience of the neighbourhood and beautiful setting, with easy access to schools, walking trails, numerous playgrounds and parks including Bronte Creek Provincial Park. You're also close to ample shopping plazas and big box stores, Starbucks, and the new Oakville Trafalgar Hospital.





TANYA CREPULJA
BROKER

Keller Williams Real Estate Associates, Brokergae
101-1270 Central Pkwy West, Mississauga, ON L5C 4P4

647.293.3785 - Direct
905.949.8866 - Office

TANYA **CREPULJA** TEAM

TCTEAM.CA

For additional pictures & property info please visit:
www.2315NatashaCir.com

kW
KELLERWILLIAMS.
Real Estate Associates, Brokerage
INDEPENDENTLY OWNED AND OPERATED

KELLERWILLIAMS
Luxury

MCNE
MASTER CERTIFIED NEGOTIATION EXPERT

McNews
READERS' CHOICE 2020
PLATINUM WINNER

All information contained herein has been supplied by the Seller to the best of his knowledge. It is not warranted or guaranteed by Keller Williams Real Estate Associates, Brokerage. All measurements are approximate.